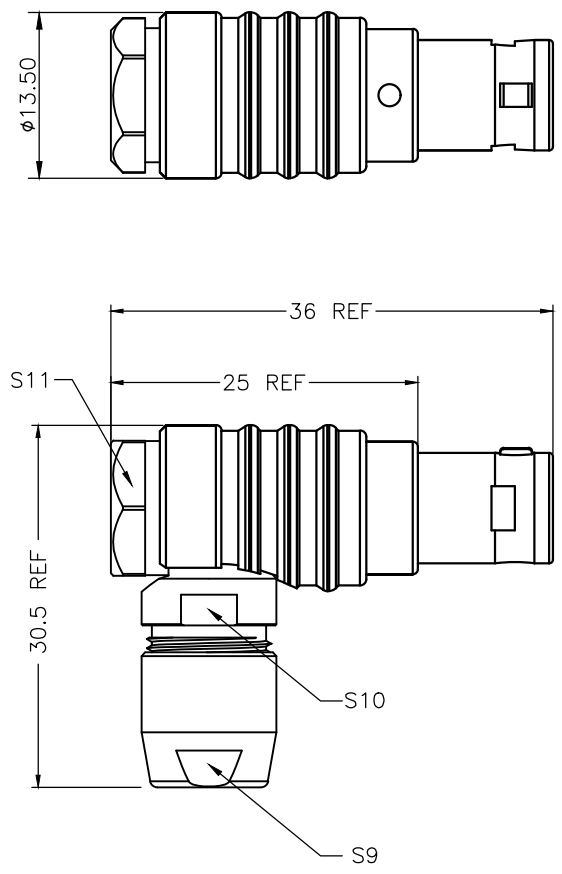


1B METAL CIRCULAR ASSEMBLY P/N DESCRIPTION :

1B A M3 X X XX X XX A
 ① ② ③ ④ ⑤

- ① Insert
 P=PEEK
 S=PPS
- ② Plating
 2=High Gold
 A=Gold flash
- ③ Number of contacts
 02=2Pin
 ...
 16=16Pin
- ④ Keying
 G= 0° E= 145°
 A= 30° F= 155°
 B= 60° J= 45°
 C= 90° K= 70°
 D= 135° L= 80°
- ⑤ Cable collet
 27=2.7mm (Cable∅2.2~2.7mm)
 31=3.1mm (Cable∅2.7~3.1mm)
 42=4.2mm (Cable∅3.2~4.2mm)
 52=5.2mm (Cable∅4.2~5.2mm)
 62=6.2mm (Cable∅5.2~6.2mm)
 72=7.2mm (Cable∅6.2~7.2mm)
 76=7.6mm (Cable∅7.2~7.6mm)



NOTE:
 1. MATERIAL:
 1.1.SHELL ASSEMBLY: COPPER ALLOY,OUTER SHELL AND COLLET NUT Cr PLATING,
 OTHER METALLIC COMPONENTS Ni PLATING
 1.2.INSERT: THERMOPLASTIC,UL94V-0
 1.3.CENTER CONTACT : COPPER ALLOY,Au PLATING
 2.NUMBER OF CONTACT : 2 TO 16 POSITION
 3.RoHS DIRECTIVE COMPLIANCE

THIRD ANGLE PROJECTION 		TOLERANCES UNLESS OTHERWISE SPECIFIED	
UNITS ■ mm □ INCH		0 PLC ± 1.00	
ANGLES 0 PLC ± 3		1 PLC ± 0.50	
1 PLC ± 2		2 PLC ± 0.25	
		3 PLC ±	
		4 PLC ±	

CIRCON[®]
 Dongguan Circon Technology Co.,Ltd.

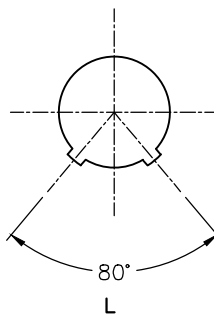
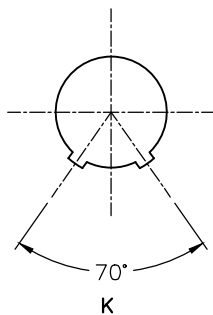
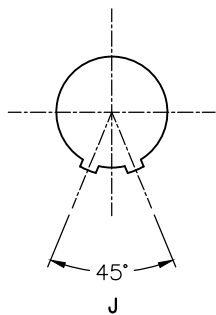
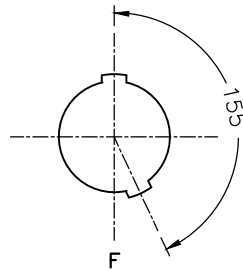
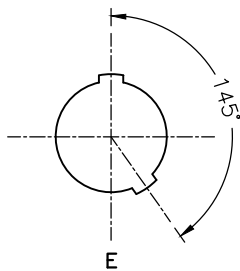
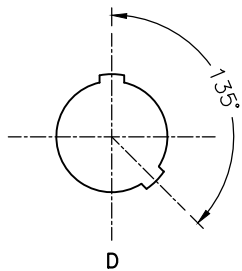
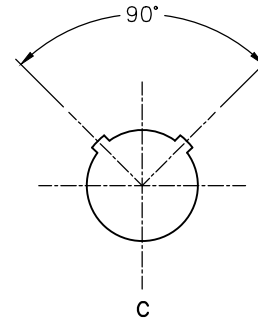
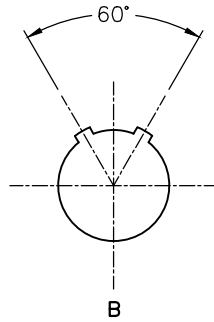
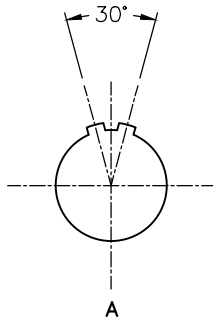
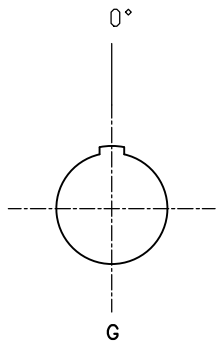
TITLE:
 1B METAL CIRCULAR CONNECTOR 90° PLUGS

APPROVED BY	JACK	DATE	2019-3-27
CHECKED BY	CHARLES	DATE	2019-3-27
DRAWN BY	ANDY	DATE	2019-3-27

C	DRAWING NO.	A-M-129	REV.
	PART NO.	1BAM3XXXXXXA	A0
SIZE:	A3	SCALE:	1:1
SHEET:		1 OF 2	

REV.	REVISION DESCRIPTION	ECR/ECN NO.	DATE
------	----------------------	-------------	------

KEYING (PLUG FRONT VIEW):



VIEW FROM TERMINATION SIDE PIN PART

02 PIN



03 PIN



04 PIN



05 PIN



06 PIN



07 PIN



08 PIN



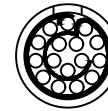
10 PIN



14 PIN



16 PIN



THIRD ANGLE PROJECTION		TOLERANCES UNLESS OTHERWISE SPECIFIED	
		0 PLC ± 1.00	
UNITS ■ mm □ INCH		1 PLC ± 0.50	
ANGLES 0 PLC ± 3		2 PLC ± 0.25	
1 PLC ± 2		3 PLC ±	
		4 PLC ±	



Dongguan Circon Technology Co.,Ltd.

TITLE:
1B METAL CIRCULAR CONNECTOR 90° PLUGS

APPROVED BY	JACK	DATE	2019-3-27
CHECKED BY	CHARLES	DATE	2019-3-27
DRAWN BY	ANDY	DATE	2019-3-27

C	DRAWING NO.	A-M-129	REV.
	PART NO.	1BAM3XXXXXXA	A0
SIZE:	A3	SCALE:	1:1
SHEET:		2 OF 2	

REV.	REVISION DESCRIPTION	ECR/ECN NO.	DATE